

AIRSYS Split Free Cooling Box

Free Cooling Solution, 1560 CFM

- Designed for computer and equipment rooms.
- 100% DC powered to provide cooling and ventilation in the event of prime power failure.
- Significantly reduces maintenance cost and extends life of existing HVAC units by minimizing compressor turn on and run time.

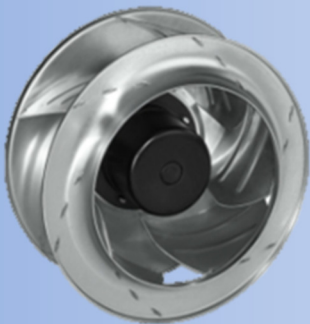


Optimized Efficiency

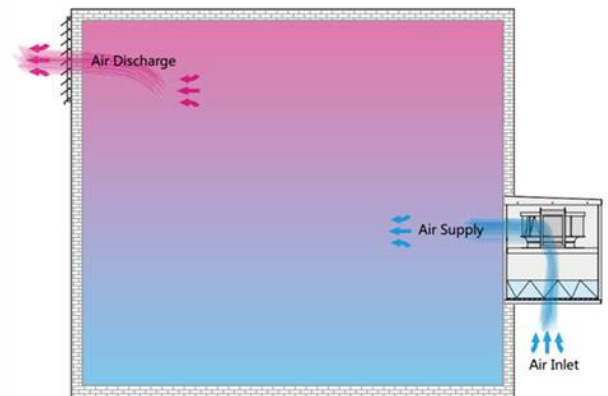
- Quieter, more efficient EC centrifugal fan offers greatly improved efficiency compared to conventional AC fans

Exceptional Reliability

- Contains only one moving part specifically selected for industry leading quality and long-term reliability



Principle of Operation



Feature Highlights

Customizable Operation

Compatible with standard inputs/outputs such as smoke/fire, hydrogen, dirty filter, and FC alarms. Optional UI allows customization of all operation related parameters (can be password protected).

Remote Monitor/Control Options

Optional communication cards can be ordered for Modbus/RS485, Modbus TCP/IP, and IP/Ethernet that enable monitoring of all environmental conditions, alarms, run time, and control for setpoints, manual mode, and scheduling.

Dual Layer Exterior Protection

Galvanized steel exterior coated with an additional layer of thermoset polymer provides two layers of maximum protection against corrosion.

Extreme Temperature Range

Designed for operation between -20°F (-29°C) and 127°F (53°C) ambient temperature with optional upgrade enabling operation at -40°F (-40°C).

Ease of Installation and Maintenance

Simple, through wall installation procedure. The main filter and fan assembly can be accessed and maintained easily from both inside and outside the shelter.

AIRSYS
Balance the Environment

TECHNICAL DATA

Model			OE.SPL.30F1
Power supply			48V DC
Fan	Type		EC Centrifugal Fan
	Power Input	kW	0.2
	Air Volume (1)	CFM	1,940
	Air Volume (2)	CFM	1,560
Sensible Capacity	$\Delta T=9^{\circ}\text{F}/5^{\circ}\text{C}$ (2)	BTU/kW	14,700 BTU/ 4.3 kW
	$\Delta T=18^{\circ}\text{F}/10^{\circ}\text{C}$ (2)	BTU/kW	29,500 BTU / 8.6 kW
Dimensions	Width	in/cm	27.2 in / 690 mm
	Depth	in/cm	29.9 in / 760 mm
	Height	in/cm	24.8 in / 630 mm
	Weight	lbs/kg	99.2 lbs / 45.0 kg
Temperature Range (3)		$^{\circ}\text{F}/^{\circ}\text{C}$	-20 $^{\circ}\text{F}$ to 127 $^{\circ}\text{F}$ / -29 $^{\circ}\text{C}$ to 53 $^{\circ}\text{C}$
Max Noise Level (4)		dBA	55

(1) Fan specification at 0 Pa static pressure

(2) Measured with standard 4" pleated filter and 50 Pa additional static pressure.

(3) Can be upgraded to Extreme Cold version with temperature range -40 $^{\circ}\text{F}$ to 127 $^{\circ}\text{F}$ / -40 $^{\circ}\text{C}$ to 53 $^{\circ}\text{C}$

(4) Measured at 95 $^{\circ}\text{F}$ / 35 $^{\circ}\text{C}$ and 6.5ft/2m away from source. Actual sound level may vary due to temperature, distance, and building geometry.

UNIT DIMENSIONS

